

**TITLE** : Changed outlet stop (flapper) grinder

**MODEL** : Sprso all models

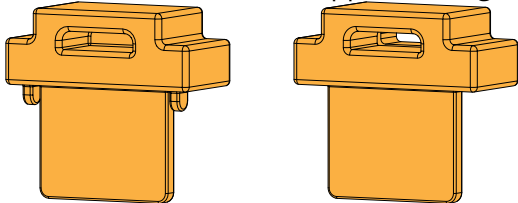
**DATE** : 2025-03-11

**NUMBER** : SI250311

## Reason for sending you this information

We have changed the outlet stop grinder because in some situation the outlet stop was creating too much friction inside the grinder which resulted in more wear than normal. In some cases the grinder would not grind any coffee anymore.

The modification of the flapper is recognizable as shown in the pictures below.

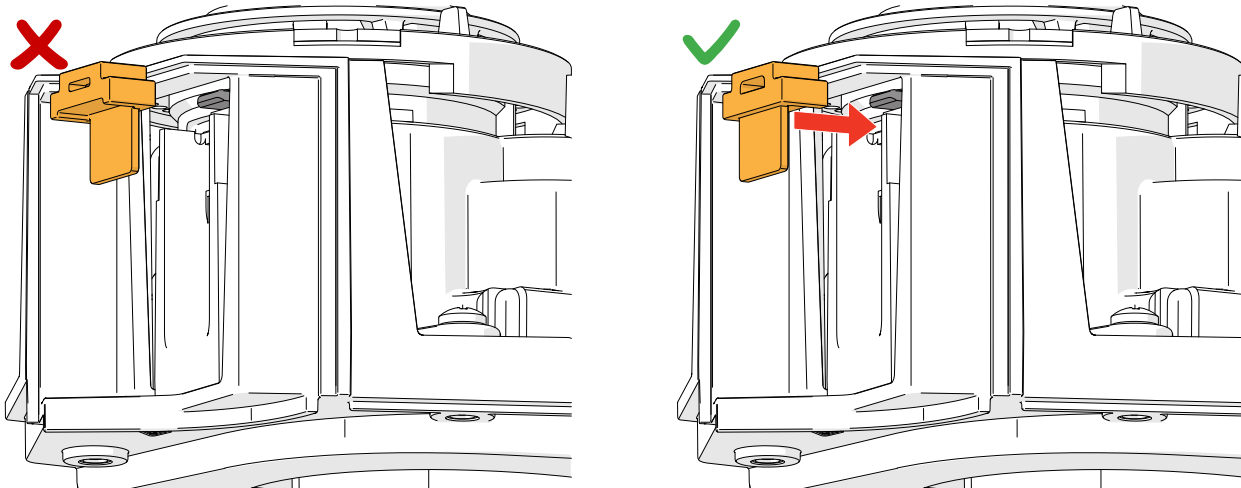


Old

New

## Part information:

The outlet stop grinder has changed a bit so that it can be placed in a different orientation, see the below picture for the correct orientation.



► First machine serial number with the modified outlet stop (flapper) grinder: **020002549615**

## Spare Part:

- none

## Deleted Spare Part:

- none